






**Hamilton**

4  2  2 

Move to your new dream home in the heart of Hamilton ready to enjoy the new year. This impeccably presented, as new family residence caters to families, couples or singles looking for contemporary sophisticated living, privacy and convenience.

This property is beautifully located in the highly sought-after Hamilton State School catchment with a choice of numerous childcare centres all within easy walking distance, ensuring convenience for young families.

Indulge in a morning coffee just steps away at the renowned Walts Espresso or take a leisurely 5-minute stroll to Portside, Riverwalk, and Racecourse Road, all providing a wealth of dining and entertainment options.

Conveniently situated only a 2-minute walk to Doomben

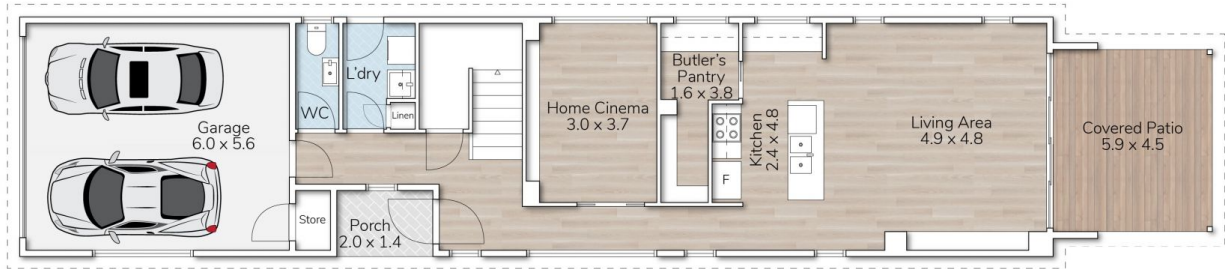
**Land Size** : 304 sqm  
**View** : <https://www.aumr.com.au/1P5253>



**Samantha Drake**  
**(07) 3154 5707**



Floor 2



Floor 1

## 26A OXFORD STREET, HAMILTON

This floor plan is for marketing purposes only. Dimensions and layout are approximate. Mountfort Media gives no guarantee or warranty over the accuracy of this plan.



INTERNAL AREA:	229M <sup>2</sup>
EXTERNAL AREA:	41M <sup>2</sup>
TOTAL AREA:	270M <sup>2</sup>
	4
	2
	2