



205/77 Jane Street West End QLD

2  2  1 

Your dream home is waiting for you at Bohemia West End. Contact us now to make it yours!

Behold, a modern architectural marvel that redefines luxury living in Brisbane's inner city. This gorgeous 2 Bedroom, 2 Bathroom unit boasts a level of quality and elegance that's truly unparalleled in the area. Let us take you on a journey through the features that will make you fall in love:

- Your Rooftop Paradise
Picture yourself basking in the sun at our rooftop swimming pool, sipping cocktails at the barbecue terrace, and taking in breathtaking panoramic views of the city. This is the lifestyle you've been dreaming of!

- Your Spacious Oasis
Step into a world of spacious open-plan living, where every

Price : \$ 668,000
View : <https://www.aumr.com.au/1P5195>

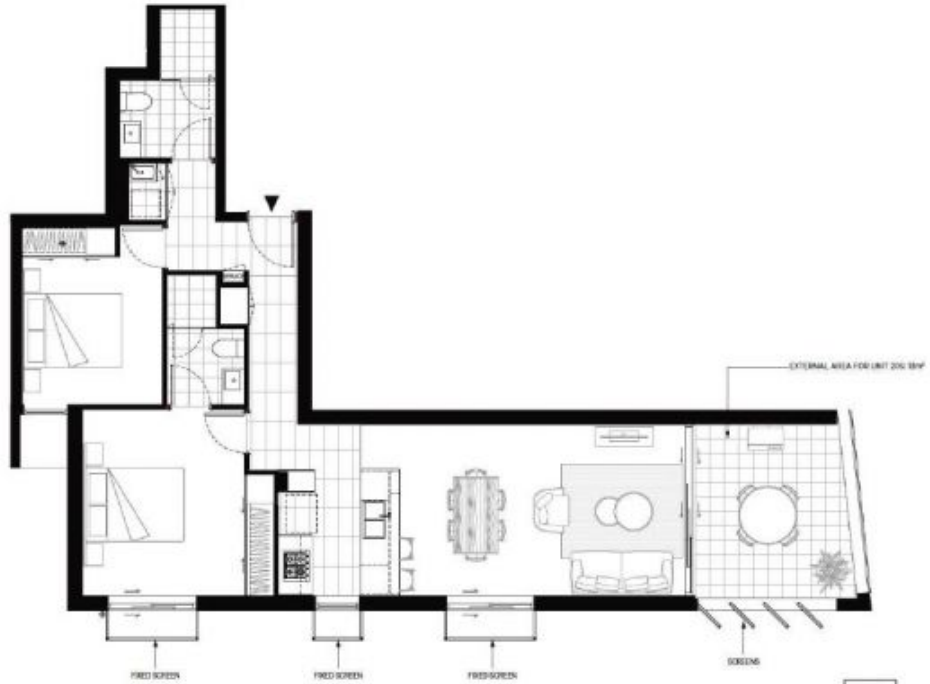


Kate Peereboom
0417 719 566



FLOOR PLAN

UNIT TYPE C - 2 BEDROOMS



2 BEDROOMS
2 BATHROOMS
1 CAR PARK

Unit Type C

Units 205*, 305, 405,
505, 605, 705, 805

Internal Area 82m²

External Area 14m²

Total Area 95m²

*Unit 205 Internal Area: 82m² External
Area: 13m² Total Area: 95m²

Disclaimer: These plans are intended as a guide only. The dimensions and areas are approximate only and may not accurately represent the actual dimensions and areas of the apartments or the spaces within them and are subject to change without notice. In addition, locations of utilities may vary during construction and fittings, appliances on these plans are for illustrative purposes only. The areas are generally measured in accordance with the Property Council of Australia method of measurement. Prospective purchasers must rely on their own enquiries and should refer to the Contract of Sale and its schedules for all matters to be included in the purchase price of the apartment, including plans, fixtures, fittings, storage, appliances and other particulars of sale. Loose furniture and plants are not included. Extent of floor finishes may vary. External spaces and landscaping indicative only. Refer to local plans for further information.

