



4/46 Reeve Street Clayfield QLD

2  1  1 

Positioned in the heart of a prestigious residential area in Clayfield and only a stone's throw to Oriel Marketplace, IGA Ascot, Oriel Park and Racecourse Road, this entry level apartment is sure to impress! A small perfectly located boutique complex of only six, this unit is conveniently positioned at the front of the complex.

Easily accessible by walk up steps, this apartment features an open plan living, dining and kitchen flowing to an east facing covered balcony overlooking the well kept lawns featuring a pristine communal pool and recreational common area.

Featuring:

- airconditioned open plan living area
- spacious light-filled master bedroom with built-in robes
- east facing balcony perfect place to enjoy your morning

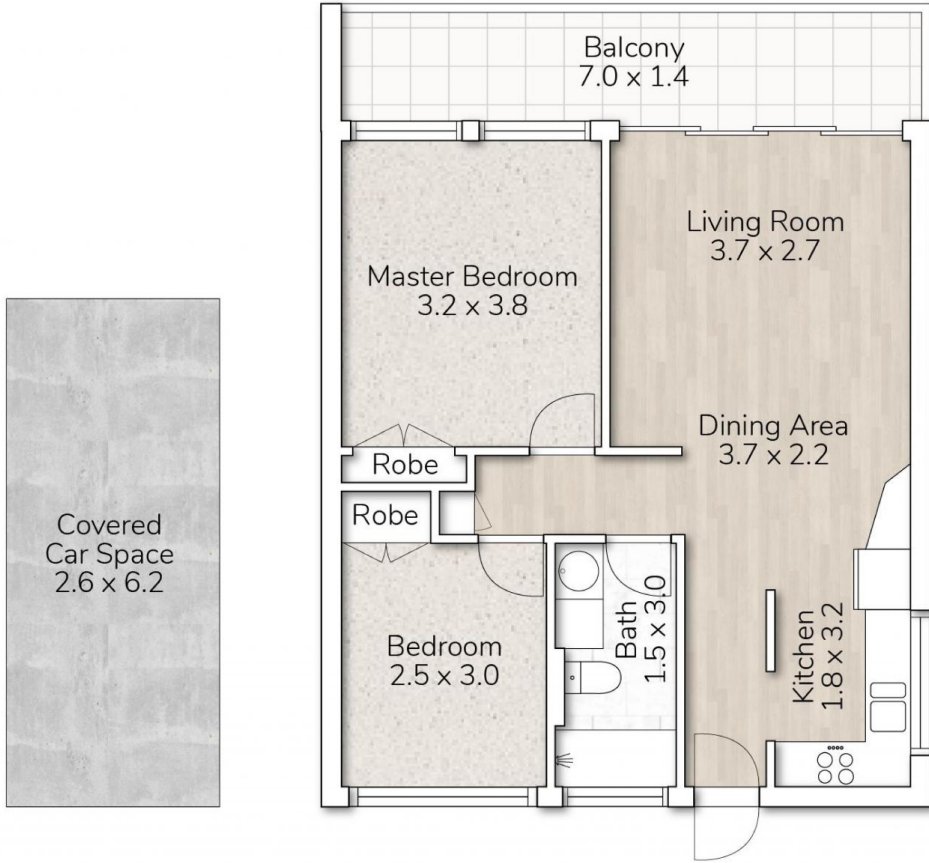
Price : \$ 372,000
Building Size : 72 sqm
View : <https://www.aumr.com.au/1P4951>



Kate Peereboom
0417 719 566



David Green
0439 542 150



4-46 REEVE STREET, CLAYFIELD

This floor plan is for marketing purposes only. Dimensions and layout are approximate. Mountfort Media gives no guarantee or warranty over the accuracy of this plan.

INTERNAL AREA:	72M ²
EXTERNAL AREA:	26M ²
TOTAL AREA:	98M ²
	
2	1