



315 Ellison Road Geebung QLD

4  2  3 

This modern Geebung gem could offer the life of comfort, style and sophistication you and your family have been looking for. At home, you will enjoy a spacious layout with plenty of room to entertain while the sought-after location means you're never far from a host of amenities including schools, shops, hospitals and so much more.

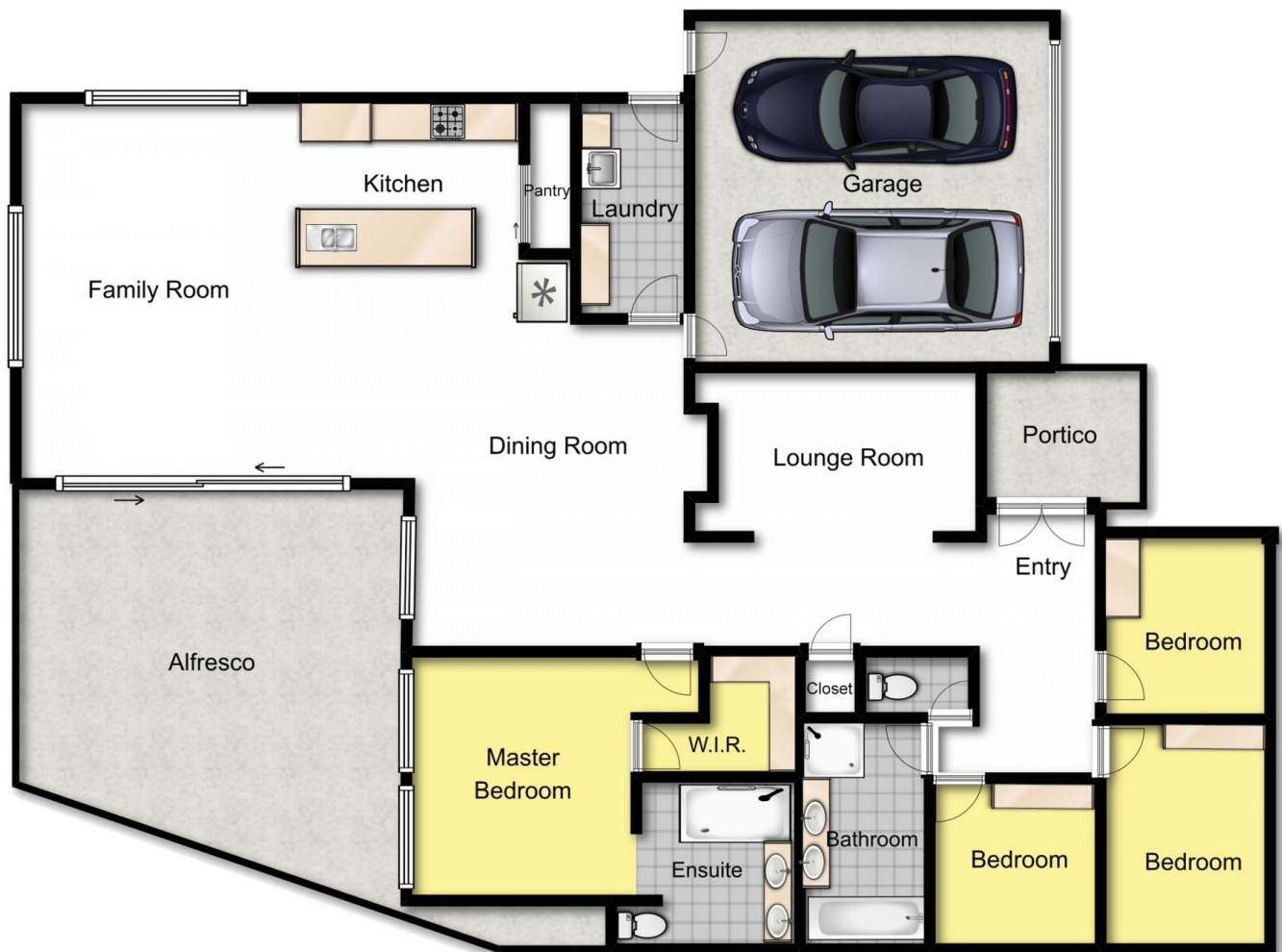
From the covered portico, you can step through the double-door entry to explore the light-filled 305sqm layout. Everyone can spread out and relax with four bedrooms and two bathrooms including the master suite with a walk-in robe and an opulent ensuite. Bedrooms two, three and four are all treated to built-in robes and there's a separate toilet off the main bathroom for functionality.

Serving as the hub of everyday life is the open-plan chef's kitchen with a large centre island, granite benchtops,

Price : \$ 1,075,000
Building Size : 305 sqm
Land Size : 611 sqm
View : <https://www.aumr.com.au/1P4934>



Jay Wu
 0402 686 929



Whilst every attempt has been made to ensure accuracy,
Floorplans are representative & should be used as a guide only.