



6/58 Alva Terrace Gordon Park QLD

2  1  1 

This light-filled unit on the top floor enjoys a perfect north-east aspect offering total privacy and overlooking your neighbours with a gorgeous urban green outlook.

Price : \$ 420,000
View : <https://www.aumr.com.au/1P4700>

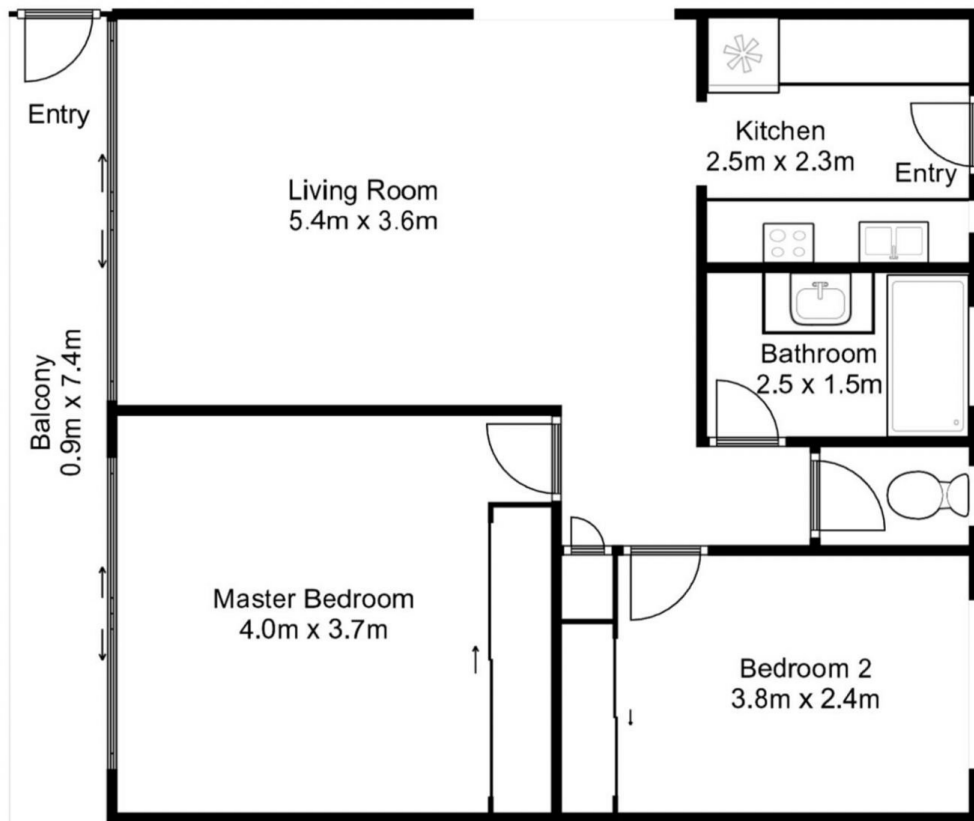
Ideal for the first home buyer/empty nester or astute investor this unit has some excellent features :

- Two built-in bedrooms
- Spacious open plan light-filled living area with air-conditioning
- Functional galley kitchen with rear access door and views to the city
- Master bedroom and living area opens to private northern balcony
- Security screens and security gate on balcony
- Oversized remote single lock up garage with laundry and storage space

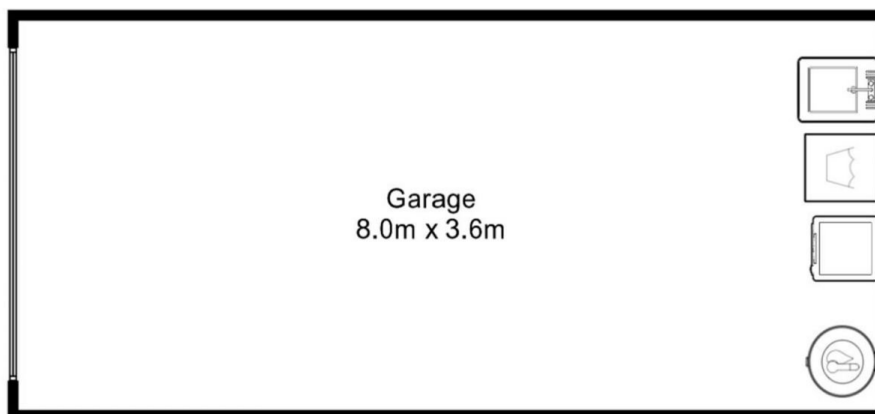


Kate Peereboom
0417 719 566

6/58 Alva Terrace, Gordon Park



Locked Garage



Floor plans are for illustration purposes only.
Measurements are in metres and are approximate.

Internal:- 82.94sqm
External:- 6.66sqm
Total:- 89.6sqm