



1 Mardi Street Carseldine QLD

4  3  2 

This well-maintained, solid-brick home is nestled along one of the most sought-after streets in Carseldine and it could now be all yours. You will live within the prestigious Winery Estate and enjoy room to move and play with a spacious layout and a good-size lot complete with a sparkling in-ground swimming pool.

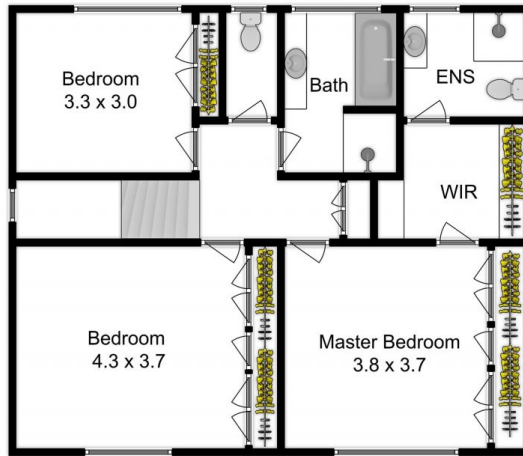
Double doors open to reveal a light-filled entry hall with direct access through to the expansive lounge and dining room. Here, easy-care tile floors flow underfoot and there are double glass sliding doors that create a seamless connection to the covered front patio. You will love to kick back and relax with friends and family in this light-filled space or simply unwind with a good movie once the kids are in bed.

Extending the floorplan even further is the open-plan


Price : \$ 1,155,000
Building Size : 299 sqm
Land Size : 756 sqm
View : <https://www.aumr.com.au/1P4465>



Jay Wu
07 3737 7610



Internal : 238 sqm
 External : 61 sqm
 Total Area : 299 sqm

Whilst every attempt has been made to ensure the accuracy of the floor plan contained here, measurements of doors, windows, rooms and any other items are approximate and no responsibility is taken for any error, omission, or mis-statement. This plan is for illustrative purposes only and should be used as such by any prospective purchaser. The services, systems and appliances shown have not been tested and no guarantee as to their operability or efficiency can be given. Floor plan created by  FastFOCUS.com.au