



2/27 Victoria Street Clayfield QLD

2  2  1 

Showcasing a well-kept interior with spacious elegance, this stylish front facing apartment boasts a spacious design in a private and secure complex in blue-chip Clayfield.

Price : \$ 501,000

View : <https://www.aumr.com.au/1P4456>

A well-positioned central address conveniently situated just 6 kms from the CBD, and an easy stroll to bus and train options. Clayfield central is just a two minute walk and offers many cafes, restaurant, fitness gyms, medical facilities and retail options.

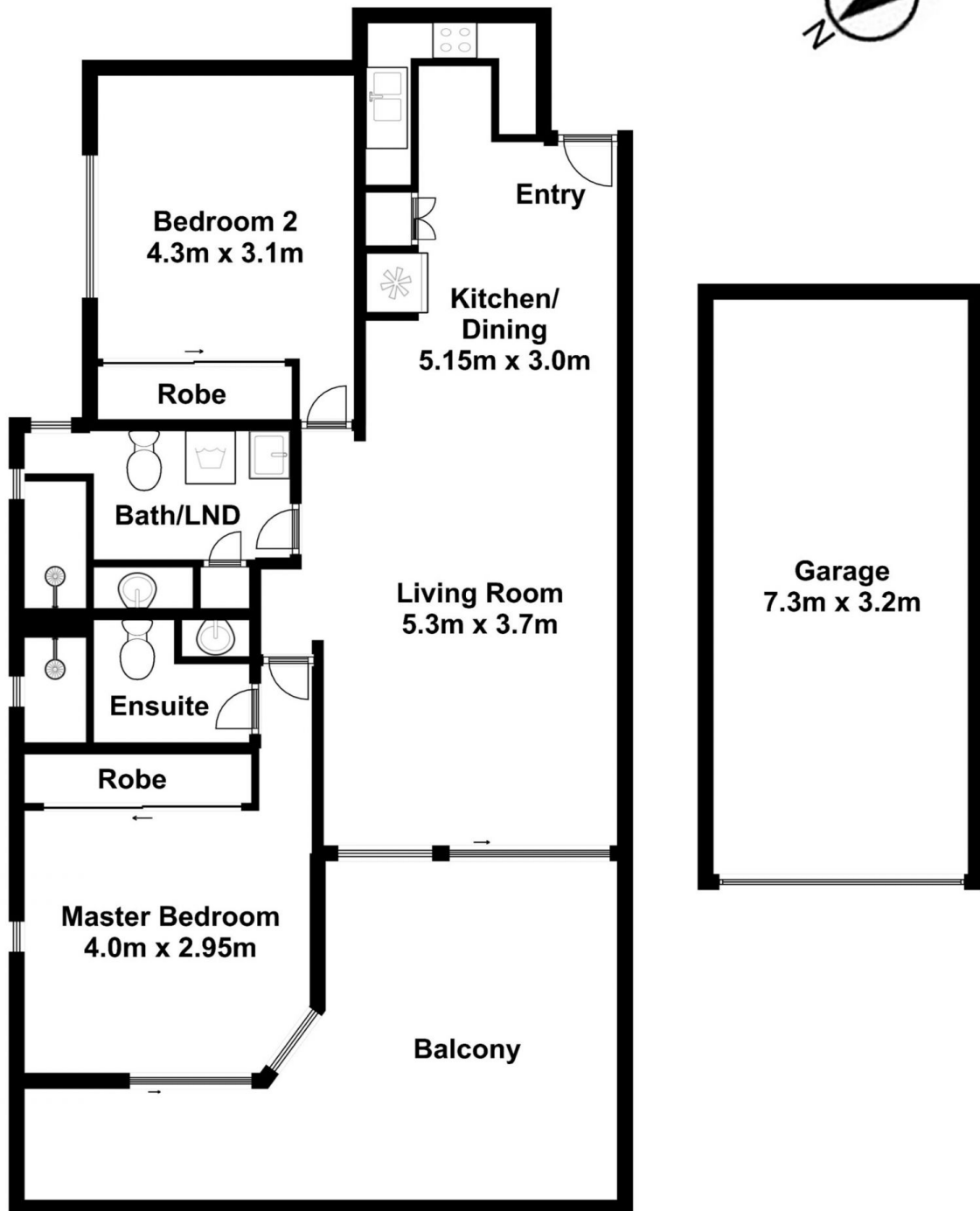


Kate Peereboom
0417 719 566

This unit is just a short walk to Clayfield College offering P1 to Year 12 and easily accessible to St Rita's College, St Margaret's Anglican School, Eagle Junction SS and several top quality child care centres .

Features include :

2/27 Victoria Street, Clayfield



Internal:- 81sqm
External:- 18.6sqm
Garage:- 23.4sqm
Total:- 123sqm

Floor plans are for illustration purposes only.
Measurements are in metres and are approximate.