



6 Parkmore Street Boondall QLD

3  1  2 

This much loved family home is perfectly positioned on an elevated north facing 615m² block in a very popular established residential pocket in Boondall. Be in for summer and enjoy the Bay breezes!

Land Size : 615 sqm
View : <https://www.aumr.com.au/1P4332>

This property offers endless scope and potential for the astute renovator looking for the next project . This home has so much to offer with multiple options to modernise and add value.

Featuring:

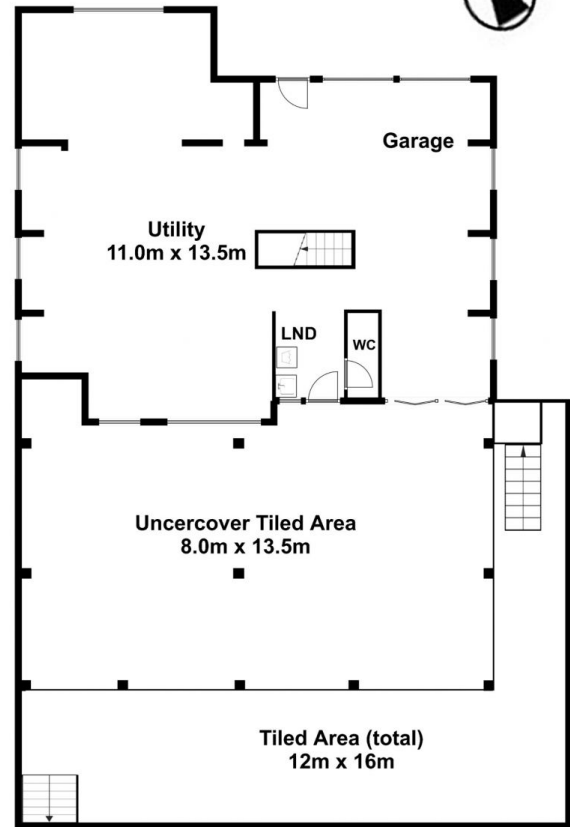
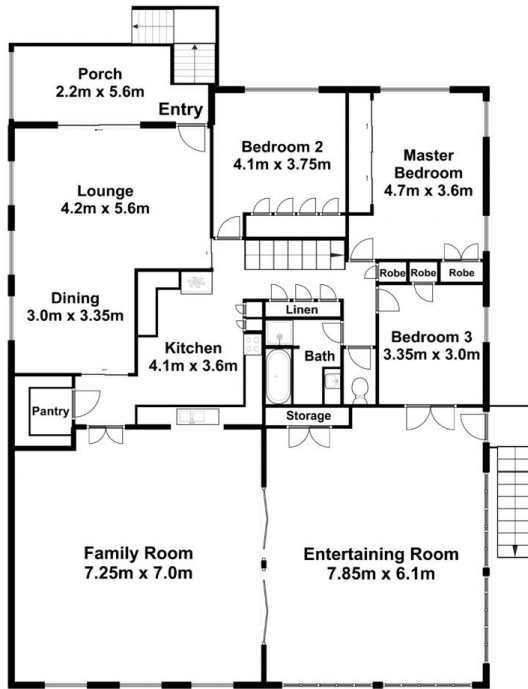
Upper Level

- 3 generous bedrooms upstairs - all with built-in robes
- 1 bathroom with separate WC
- Mostly original kitchen with 900mm stainless gas upright stove



Kate Peereboom
(07) 3154 5707

6 Parkmore St, Boondall



Floor plans are for illustration purposes only.
Measurements are in metres and are approximate.

Internal:- 394.25sqm
External:- 204.30sqm
Total:- 598.55sqm