






212/9 Christie Street South Brisbane QLD

2  2  1 

Treat yourself to a new level of luxury with this spectacular inner-city apartment set right in the vibrant heart of South Brisbane. Southbank's renowned cultural hub is just a short walk from your front door and you're only a gentle stroll from top-rated restaurants, bustling cafes, shops, public transport and the Mater Hospital Brisbane.

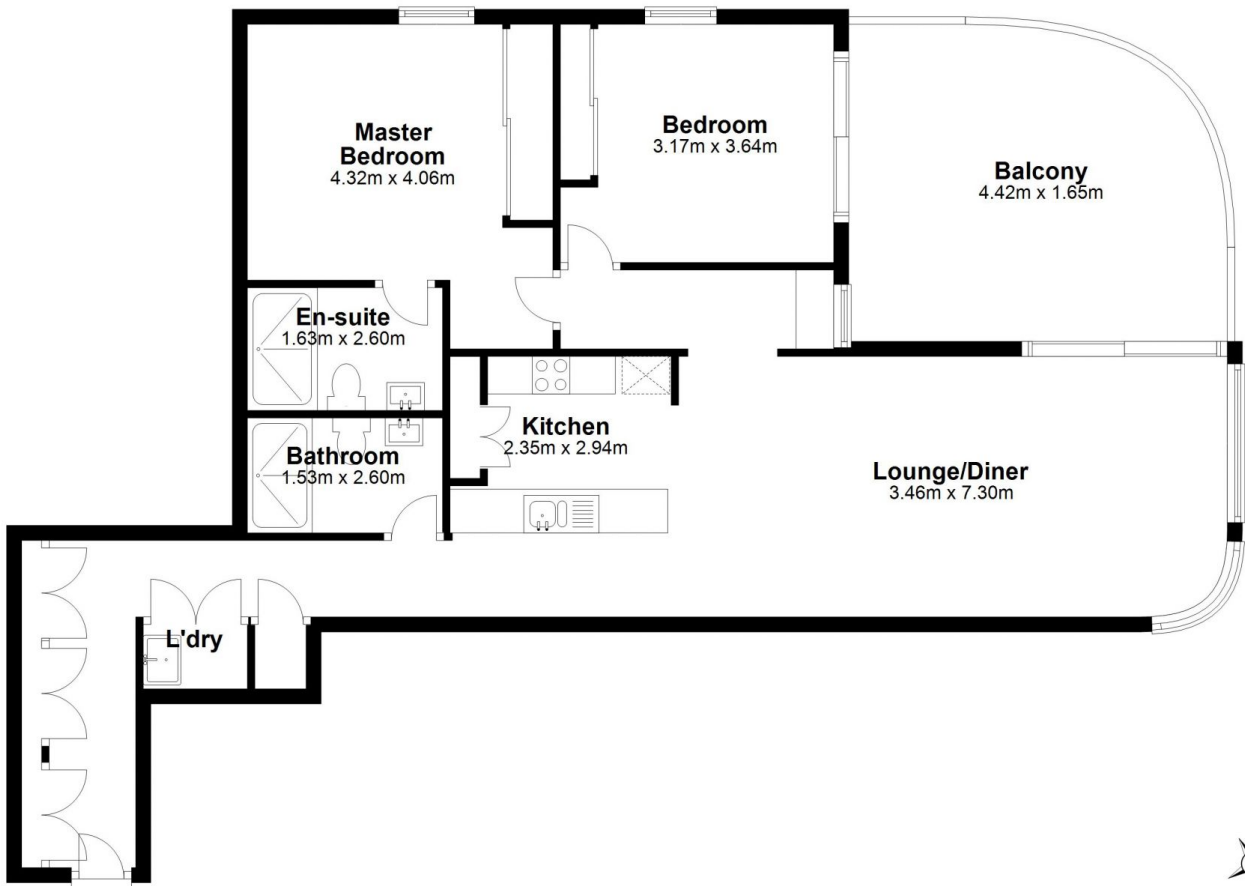
Floor-to-ceiling walls of glass draw natural light into the open-plan kitchen, living and dining space with direct access to the covered balcony. Here, you can host guests, dine outdoors and enjoy all the sights and sounds of city life before retreating inside to your private and peaceful haven.

Love to cook? The kitchen is a sleek culinary oasis with stainless steel appliances, sweeping benchtops and an abundance of storage while the open design is ideal for

Price : Contact Agent
Land Size : 102 sqm
View : <https://www.aumr.com.au/1P4021>



Jay Wu
07 3737 7610



Unit 212, 9 Christie Street, South Brisbane, Qld 4101

Dimensions are approximate & therefore should only be used for illustrative purposes.

Total area: approx. 89.2 sq. metres